



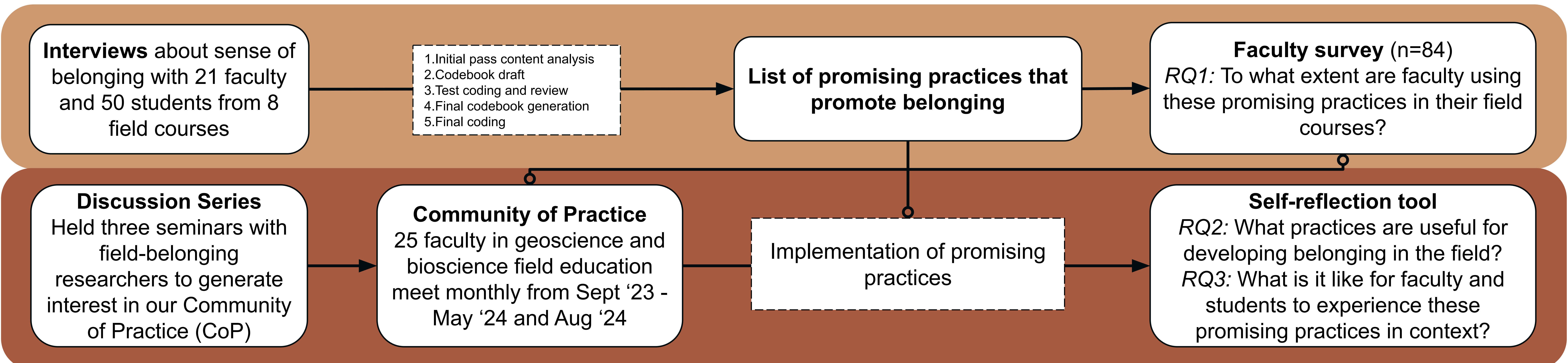
Enriching Research Findings on Belonging in Field Education with a Community of Practice

Holly Cho¹, Lucas Hill², Alison Jolley (AJ)³, Kari O'Connell¹, Stephanie Shaulskiy⁴, Holly White⁵

¹ Oregon State University; ² University of Wisconsin-Madison; ³ University of Waikato; ⁴ University of Michigan; ⁵ University of Maine



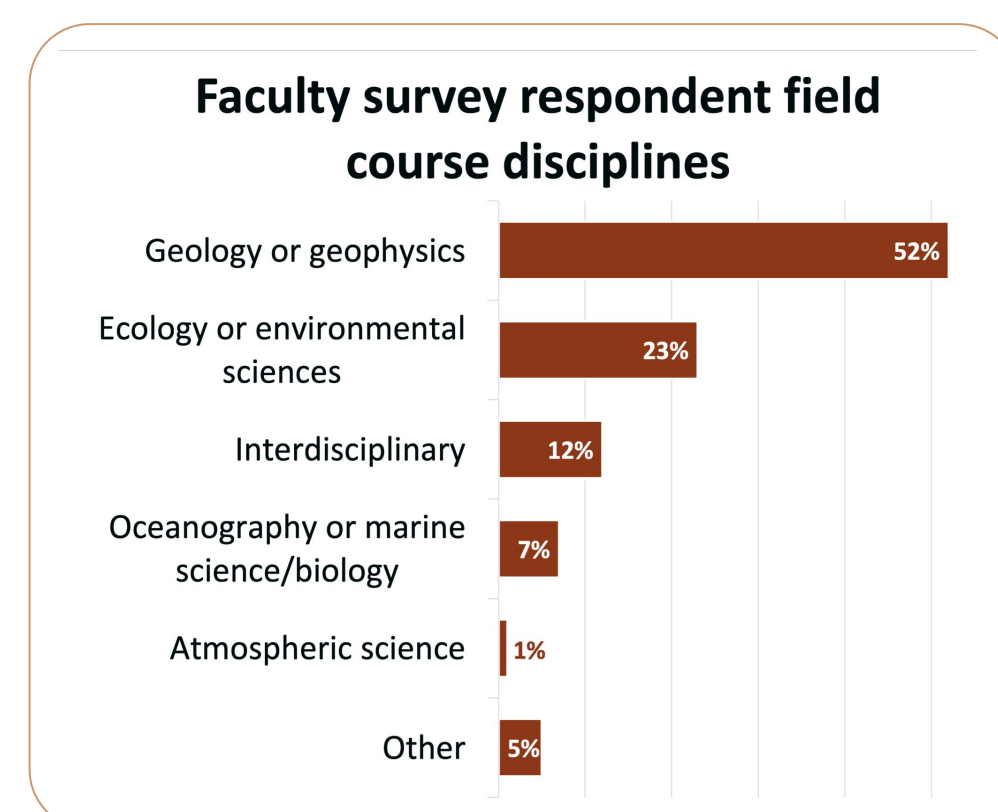
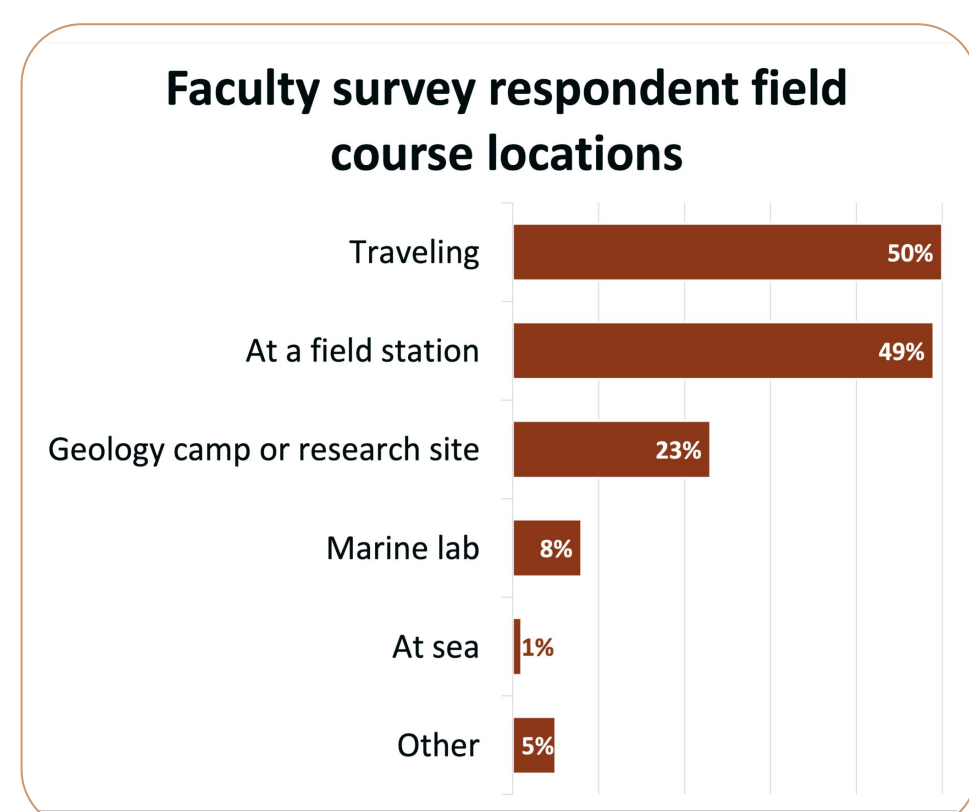
belonginginthefield.com
NSF Award #2110824



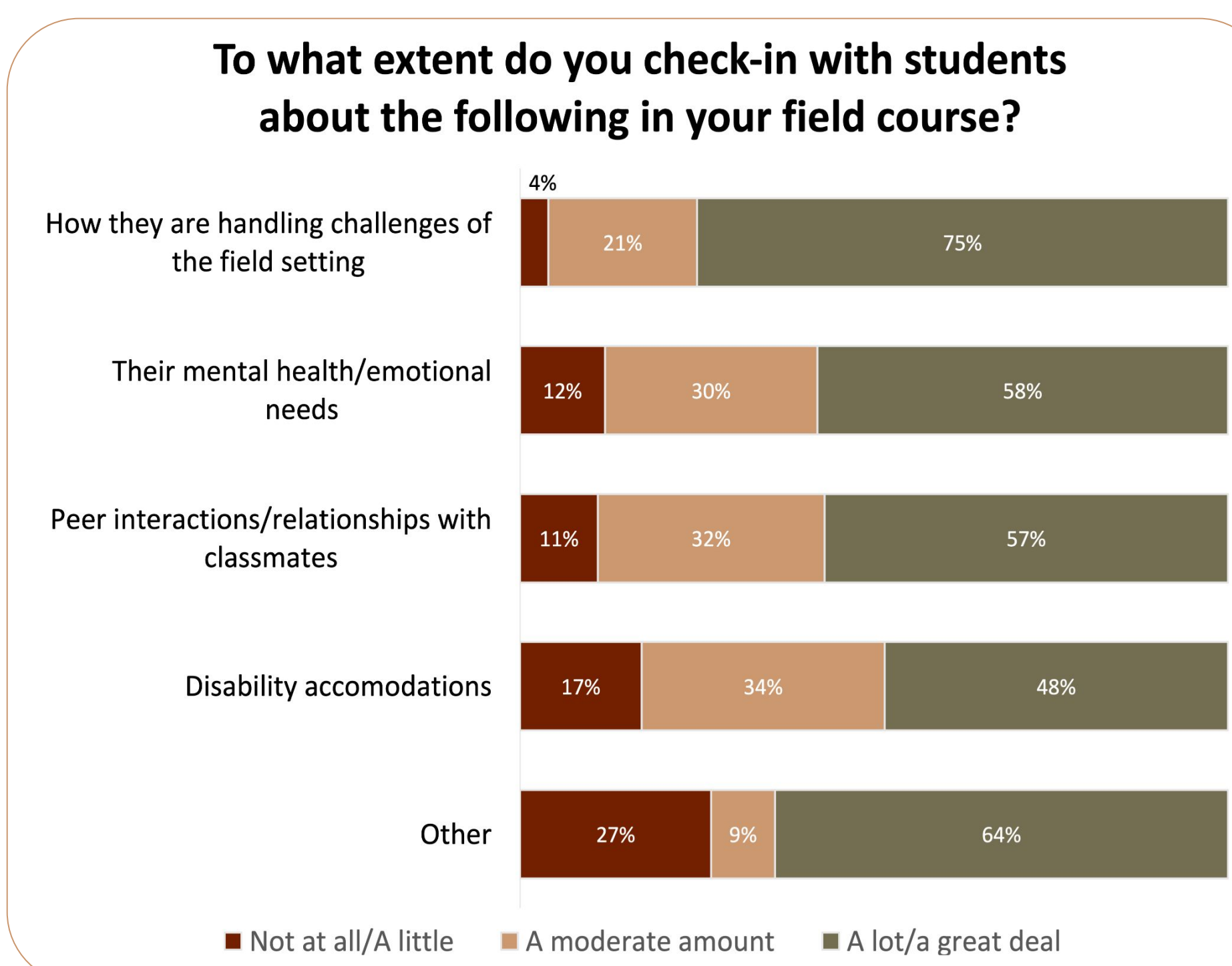
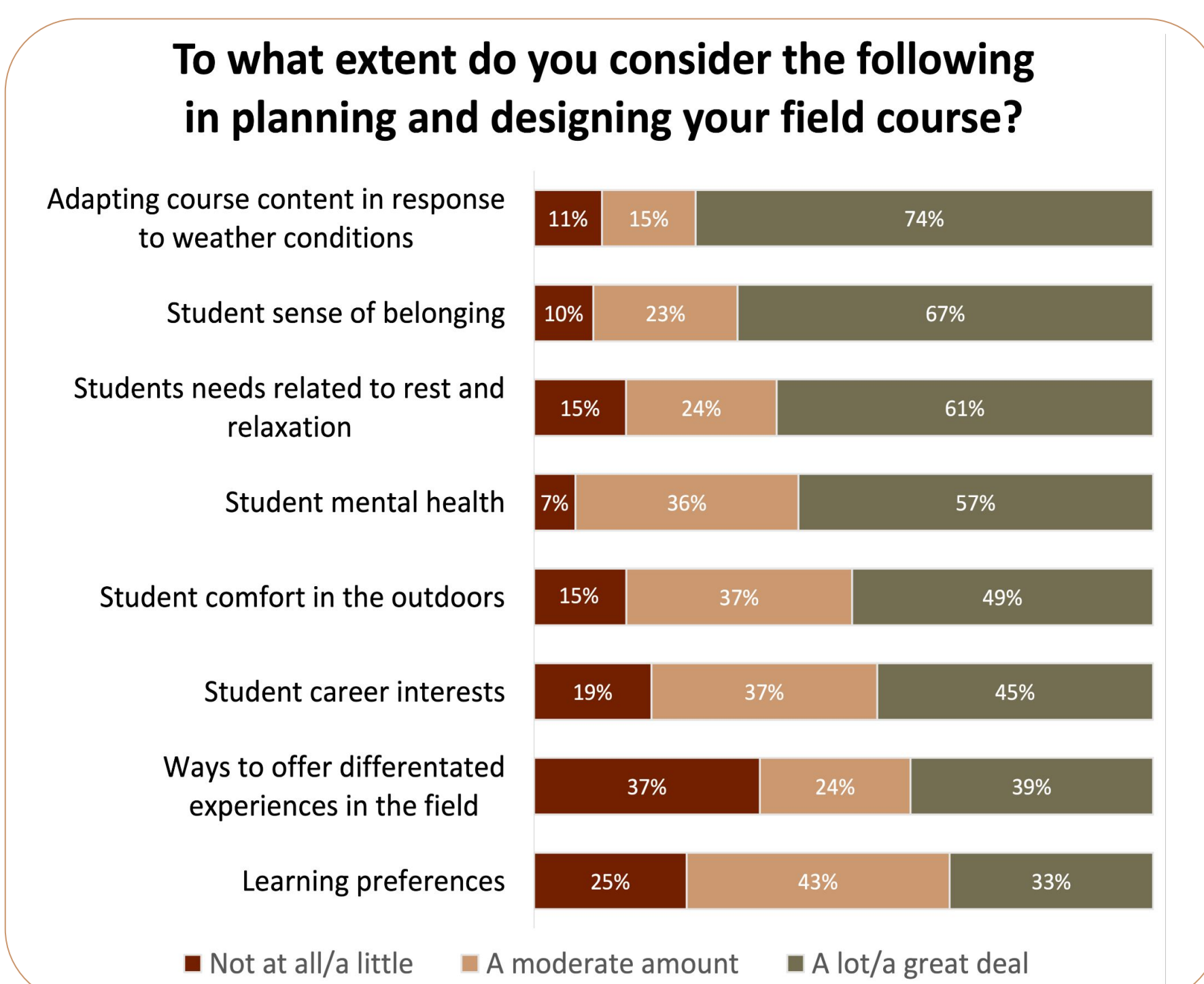
Promising Practices and Faculty Survey

The promising teaching practices identified from our interviews were divided into six categories:

- Orientation (to the course)
- Knowing your students
- Co-instructors and TAs
- Teaching moves/messages
- Peer interactions
- Informal interactions.



To investigate the extent to which these practices are used, we surveyed faculty who teach residential field courses in the bio and geosciences (n=84). For one example, see below:



Community of Practice and Self-Reflection Tool

The CoP provides an avenue for us to share, discuss, and enrich our findings while building the capacity of participants to promote sense of belonging in their courses. Participants were selected to create a community inclusive of diverse disciplines, course types, institution types, and social identities. During CoP meetings, participants reviewed and discussed faculty survey findings and generated new ideas for promoting belonging in their courses.

Principles for CoP success

- *Be nimble in responding to feedback:* Solicit feedback after each meeting and share the changes made in response at the next meeting
- *Build community through dialogue:* Maximize time spent in conversation and offer opportunities to connect in varied group sizes and compositions
- *Offer multiple ways to engage:* Use tools like recordings, polls, chat, and shared notes documents to connect synchronously and asynchronously
- *Model community norms:* Co-create norms and agreements for meetings; continually model the openness and understanding with which you want participants to engage with each other

Implementation and Self-reflection tool

- CoP participants select a promising practice or practices to try out in their field courses, assess student responses, and offer feedback to us using a self-reflection tool
- This tool is designed to help participants reflect on their experience of implementing, with sections to complete before, during and after their courses